



WELLINGTON-GUELPH HEALTH & HOUSING COMMUNITY PLANNING
TABLE – COMMUNITY WEBINAR

2025.11.03

Meeting Agenda

1. Welcome and Review Meeting Objectives
2. Celebrating Recent Successes in Health and Housing Integration
3. Our Journey to Date: Overview of the Work of the Wellington-Guelph Health & Housing Community Planning Table
 - a) Mission, Vision, Values
 - b) Putting priority areas of focus into action
 - c) Aligning partners towards collective action and impact
4. Next Steps
5. How to Get Involved & Stay Informed
6. Question and Answers (Time-permitting)
7. Closing Remarks



Health & Housing Community Planning Table - Community Partner Meeting

Meeting Objectives:

1. Engage and invite collaboration with impacted partners in the work of the Planning Table.
2. Provide an update regarding work of Wellington-Guelph Health and Housing Community Planning Table (WGHHCT)

Wellington Guelph Health & Housing Community Planning Table Membership



Emmi Perkins (Co-Chair)	Guelph Wellington OHT
Luisa Artuso (Co-Chair)	County of Wellington
Sarah Gillies	County of Wellington
Angela Stanley	Wellington Health Care Alliance
Elsa Mann	Rural Wellington Community Team
Councillor Linda Busuttil	City of Guelph Council
Dominica McPherson	Wellington Guelph Poverty Task Force
Kristen Cairney	Wyndham House
Melissa Kwiatkowski	Guelph Community Health Centre
Kristen Kerr	Stonehenge Therapeutic Community
Gail Hoekstra	Stepping Stone
Helen Fishburn	CMHA of Waterloo-Wellington
Rita Isley	WDGPH
Councillor Dave Anderson	County of Wellington Council
Eric Philip	Thresholds Homes and Supports
Andrea DeJong	Guelph General Hospital
Sharon Deally-Grzybowski	Homewood Health Centre
Colleen Clack-Bush	City of Guelph (on behalf of Guelph Wellington Paramedic Services)
Dave Purdy	County of Wellington
Alyssandra Kent	Community Resource Centre of North and Centre Wellington
Kari Simpson	East Wellington Community Services

Reflection

“Returning to community health work after five years away offers me a unique perspective on the changes that have occurred in Guelph Wellington's systems of care in that time. Reentering this work I have been struck by the commitment to collaboration that is evident amongst health service and housing providers; not just the willingness, but the genuine desire, to share information and develop collaborative, creative plans that place the wellbeing of vulnerable community members at the centre of the process. True collaboration cannot happen without commitment at every level of systems and organizations. Commitment to planning and visioning together, to finding flexible and novel ways of working, to having difficult conversations in ways that deepen trust and connection. When we are deeply immersed in the work of making change a reality, it can be hard to recognize the progress that is truly being made. To those who have been engaging this work through the OHT, the Health and Housing Planning Table, and beyond thank-you for your efforts. I'm so grateful to be rejoining a system of care that is not only committed, but connected in its commitment, to building healthier and safer communities one step at a time.”

Kerry Manthenga, Senior Director, HART Hub and Integrated Programs, GCHC



Celebrating Recent Successes in Health and Housing Integration



HART Hub



HOME Van



Winter Response Plan

Guelph CHC Update:



Guelph Wellington

HART Hub



What is GW HART Hub?

Guelph Wellington Homelessness and Addiction Recovery Treatment (HART) Hub is a healthcare facility, and a regional network of care teams, that **provides care, housing, and treatment for people** in our community **with the most complex needs**.

This includes people in our community who:



- Face barriers to accessing health services
- Have multiple complex health conditions, including moderate to severe mental health or substance use disorders
- Are homeless, precariously housed, or need intensive support to maintain stable housing
- Require highly specialized services from multiple providers to improve their well-being

HART Hub Partners



Current services available through the HART Hub



Health care :

Provided by Guelph CHC + Wyndham House

- onsite and outreach services
- episodic nursing care:
 - foot care, wound care
- primary care:
 - medical practitioners
- health and recovery support
 - Naloxone distribution and education



Social supports:

Provided by Guelph CHC + Wyndham House

- onsite and outreach services
- counselling
- peer support
- ID clinic
- shower program
- system navigation and referrals

Current services available through the HART Hub



Crisis Stabilization Beds:

Provided by Stonehenge TC

- Short-term, voluntary, non-medical residential beds offered to people experiencing a mental health or substance use crisis
- **If you are in crisis or need support, call Here 24/7:
1-844-HERE247 (437-3247)**



Crisis Services:

Provided by CMHA WW

- Integrated Crisis Centre: support and intervention for mental health and/or substance use crises
- **If you are in crisis or need support, call Here 24/7:
1-844-HERE247 (437-3247)**

Future services available through the HART Hub



Withdrawal Management:

Provided by Stonehenge TC

- 24/7 medical and social support for individuals who are withdrawing from substances.
- **Due to open 2026 - 2027**



Supportive Housing

Provided by Stonehenge TC and County of Wellington

- 150 units in Guelph and Wellington County.

Guelph CHC Update:



Substance
Use Health
Services



What is H.O.M.E.?

Health Outreach Mobile Engagement (HOME) provides 7 days/week mobile support, harm reduction supplies, access to basic needs, and resource navigation to people in Guelph-Wellington who are struggling with their substance use and experiencing homelessness or precarious housing.

Provided by City of Guelph, Guelph CHC, Sanguen Health Centre, and the Mount Forest Family Health Team

H.O.M.E.
Health Outreach Mobile Engagement

- low-barrier access to mobile health care
- connections to housing, health, and income services, as well as food and basic needs supports
- connecting at encampments and priority stops in the community
- community schedule posted online



What is Drug Checking?

Drug checking is a tool that informs people who use unregulated substances about what is in their drugs, allowing them to make educated decisions about consumption.



- located on the H.O.M.E. truck
- provided at select stops
- detects potentially toxic contents in drug samples

What is Stay Sharp?

Accessible community health services and harm reduction: supplies for safer drug use, needle exchange, sharps disposal, education, and connection to resources.



- mobile and place-based model as of October
 - mornings: on H.O.M.E. truck
 - afternoons: Royal City Mission
 - 7 days/week

Celebrating Recent Successes in Health and Housing Integration



HART Hub



HOME Van



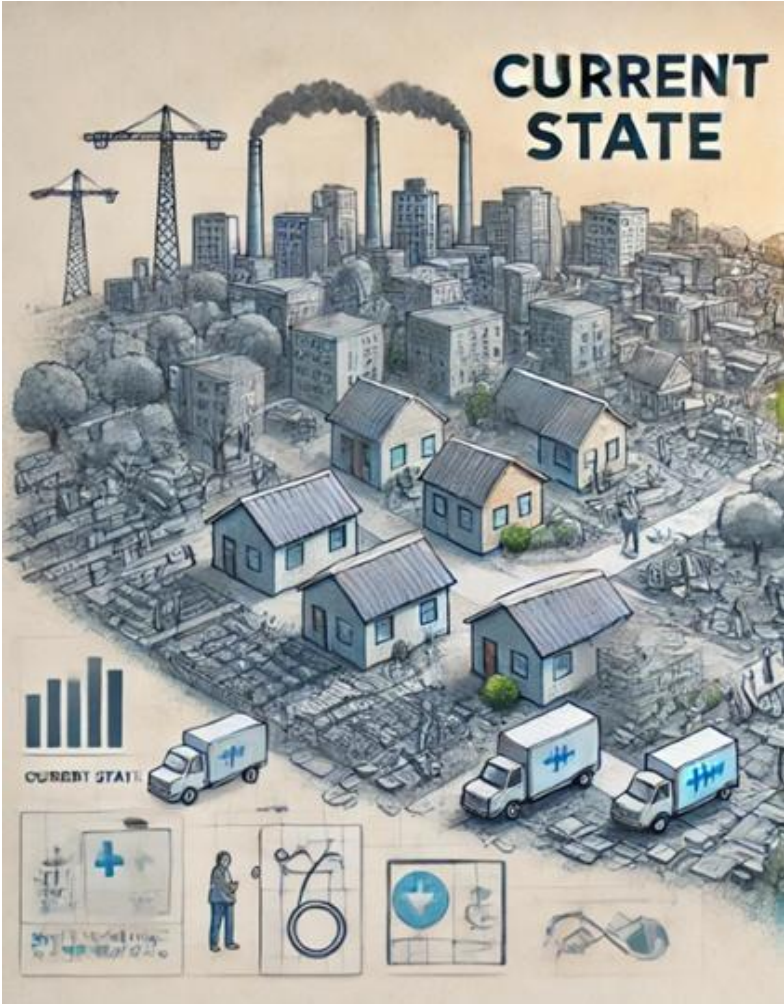
Winter Response Plan

Symposium Highlights - Consensus

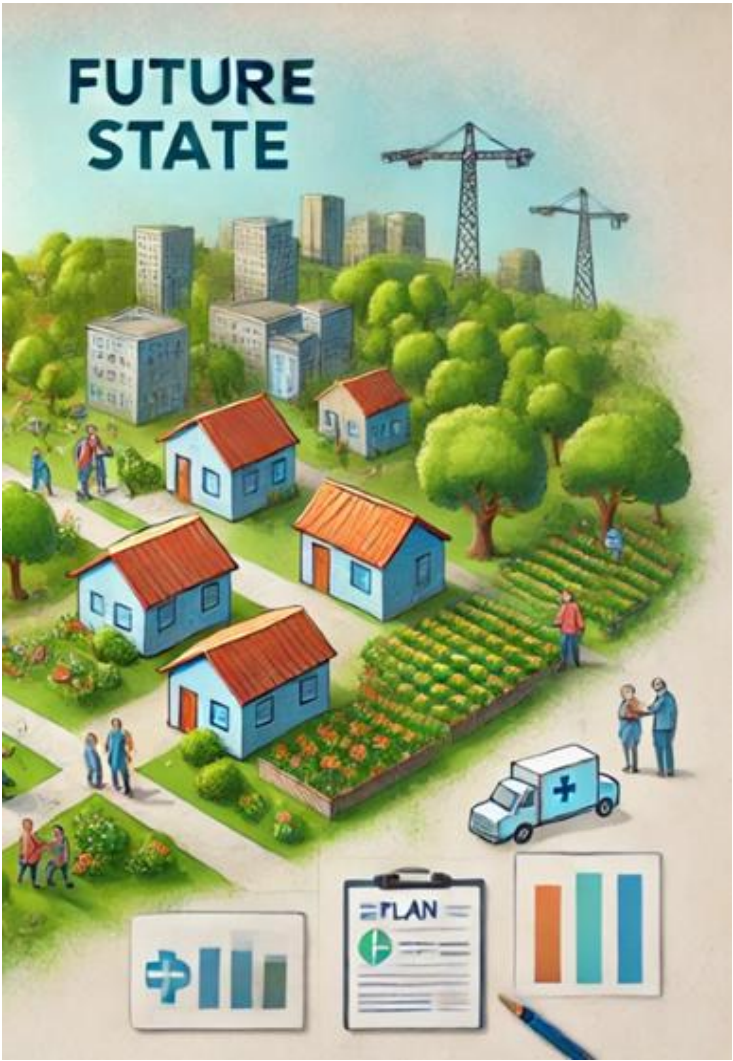
The need for a Wellington-Guelph Health and Housing Community Plan!



How do we get from here to there?



**Health and
Housing
Community Plan**





Vision

Everyone in Wellington County and Guelph has a safe place to call home in a loving and healthy community.



Values

Identified by W-G Lived Experience Advisory Group

Initiatives proposed in the Health and Housing Community Plan should be:

- Accessible
- Connected
- Dignified
- Equitable
- Responsive
- Safe

Our mission is to collectively create and support a system to ensure our community has equitable access to safe, dignified, and connected health and housing services that are available to all. Grounded in trust, collaboration, and the wisdom of lived experience, our plan fosters well-being and belonging for everyone.

Mission

**Housing
Options**

**Indigenous
Solutions**

**Emergency
Responses to
Homelessness**

**Provision of Basic
Needs for Persons
Experiencing
Homelessness**

**Policy and
Funding
Advocacy**

**Public
Education**

**Integration
of Health
and Housing**

**Health Services:
Including
Primary Care**

**Health Services:
Mental Health
and Substance
Use Services**

**Preventative
Services:
Upstream
Prevention**

**Preventative
Services:
Situational
Interventions**

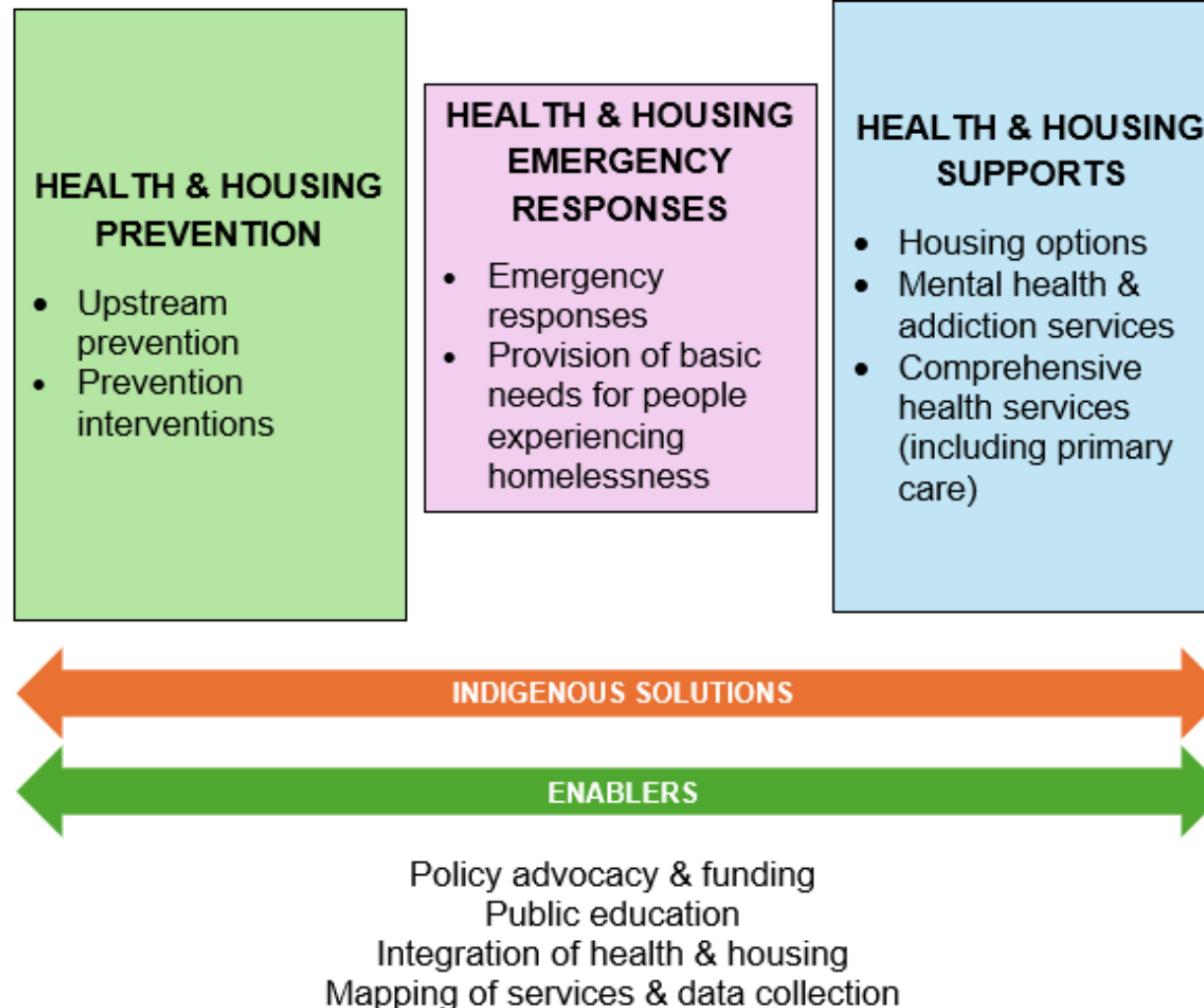
**Mapping of
Services and
Data Collection**

VISION:
Everyone in Wellington County and Guelph has a safe place to call home in a loving and healthy community.

We Will.....	Priority Focus Area	WHO?
Reduce homelessness, mental health challenges, and addictions by ensuring access to support and resources that promote social inclusion and enhance overall wellness	Upstream Prevention	WDG Public Health w GGG
Prevent homelessness and support housing stability for individuals at high risk of, newly experiencing, or who have previously experienced homelessness by ensuring access to targeted, prevention interventions.	Prevention Interventions	CAB
Ensure everyone can access safe, dignified, and accessible emergency interventions, including accommodations, integrated health services, and crisis response.	Housing Emergency Response	Housing Services
	Health Emergency Response	GW OHT
Ensure access to washrooms, showers, water, food, laundry and warming/cooling spaces, while linking people to permanent housing and health solutions.	Provision of Basic Needs	PEC
Increase the availability & diversity of housing options to meet current housing needs.	Housing Options	Housing Services
Support equitable access to mental health and substance use services.	MH&A Services	Tier 4/5 WG
Support equitable access to comprehensive health services, including primary care	Comprehensive Health Services	GW OHT
Enhance access to culturally appropriate services for Indigenous peoples with precarious health and housing, by supporting Indigenous-led solutions and establishing partnerships to develop tailored services and housing options	Indigenous Solutions	Wellington-Guelph Health and Housing Community Planning Table (WGHCPT)
Create community understanding and empathy for people experiencing homelessness, addictions and mental health issues	Public Education	
Establish a collective approach to advocate for policy reforms and changes to funding to address health and housing needs.	Policy Advocacy & Funding	
Integrate health supports into all housing services & housing services into health services	Health & Housing Integration	
Develop and maintain user-friendly service mapping and data collection on health and housing services that provides data necessary to make informed decisions.	Mapping of Services & Data Collection	

Our Focus Areas in Action

To identify and implement solutions to address the **needs of people experiencing homelessness and precarious health and housing in Wellington-Guelph**, we need to focus in the following areas:



Health and Housing Prevention

1. Upstream Prevention (Rita Isley)

WDG Public Health, Growing Great Generations

Goal: To reduce homelessness, mental health challenges, and addictions by ensuring access to support and resources that promote social inclusion and enhance overall wellness

2. Prevention Interventions (Dominica McPherson & Kristen Cairney)

Community Advisory Board

Goal: To prevent homelessness and support housing stability for individuals at high risk of, newly experiencing, or who have previously experienced homelessness by ensuring access to targeted, prevention interventions.

Health and Housing Emergency Responses

3. a) Housing Emergency Response (Sarah Gillies)

Housing Services

3. b) Health Emergency Response

Wellington Guelph Health and Housing Community Planning Table

Goal: Ensure everyone can access safe, dignified, and accessible emergency interventions, including accommodations, integrated health services, and crisis response.

4. Provision of Basic Needs (Dominica McPherson & Luisa Artuso)

Poverty Elimination Collaborative in Coordination with Service and System Players

Goal: Ensure access to washrooms, showers, water, food, laundry and warming/cooling spaces, while linking people to permanent housing and health solutions.

Health and Housing Supports

5. Housing Options (Dave Purdy)

Housing Services in Partnership with the CAB

Goal: Increase the availability and diversity of housing options to meet current housing needs.

6. Mental Health & Addictions Services (Kristen Cairney)

GW OHT Tier 4/5 Working Group

Goal: To ensure equitable access to mental health and substance use services.

Mental Health and Addictions Services: Tier 4/5 Working Group

- Sharp rise in drug poisonings – high-strength fentanyl & veterinary tranquilizers
- 8 Crisis stabilization beds fully active– strong demand.
- *Home Van* outreach launched – mobile harm reduction, testing & nursing supports in encampments
- Burnout/Compassion Fatigue training and support for leadership/frontline staff underway
- CARP protocol advancing – collaborative approach to managing complex, high-risk MH&A situations
- Partnership with University of Guelph – studying risk assessment and system barriers
- Next step: finalize CARP tools for rollout in December

Health and Housing Supports

7. Comprehensive Health Services (Emmi Perkins)

GW OHT

Goal: To ensure equitable access to comprehensive health services, including primary care

Planning Table's Action Areas

The Planning Table is responsible for:

- Mapping of Services and Data Collection
- Health and Housing Integration
- Indigenous Solutions
- Public Education
- Policy Advocacy and Funding

Enablers

8. Data Collection & Mapping (Amber Purewal)

Goal: To develop and maintain user-friendly service mapping and data collection on health and housing services that provides data necessary to make informed decisions.

9. Integration of Health & Housing (Emmi Perkins, Sarah Gillies, & Kerry Manthenga)

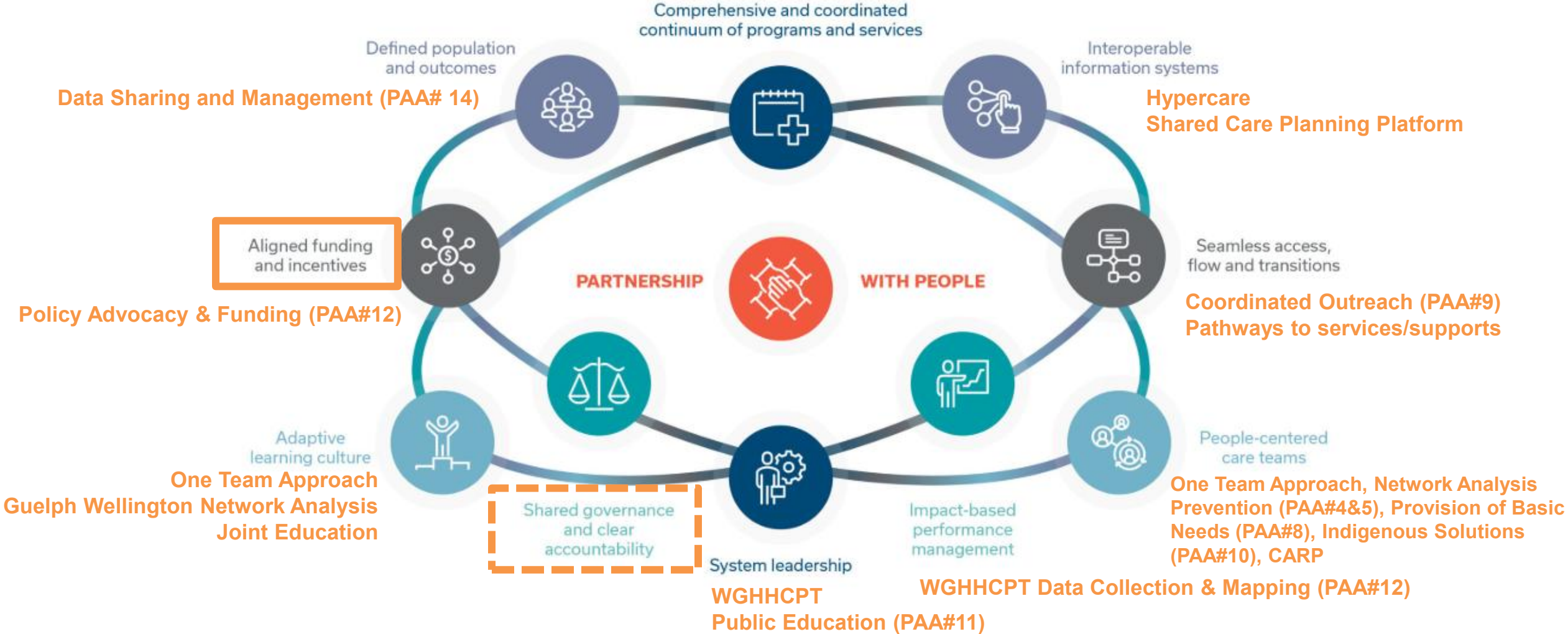
Goal: Integration health supports into all housing services and integrate housing services into health services

Integration of Health and Housing (Priority Action Area #13)

The 10 Design Principles of Integrated Care

Health and Housing Services System Mapping & Analysis (PAA#14)

Housing Options (PAA#1), MHA Services (PAA#2), Comprehensive Health Services ((PAA#3), Health & Housing Emergency Response (PAA#6 &7)



Enablers

10. Indigenous Solutions (Eric Philip & Emmi Perkins)

Goal: To enhance access to culturally appropriate services for Indigenous peoples with precarious health and housing, by supporting Indigenous-led solutions and establishing partnerships to develop tailored services and housing options.

11. Public Education (Dominica McPherson & Rita Isley)

Goal: Create community understanding and empathy for people experiencing homelessness, addictions and mental health issues.

12. Policy Advocacy & Funding (Dave Purdy)

Goal: Establish a collective approach to advocate for policy reforms and changes to funding to address health and housing needs.

Community Planning Process



Completed

Create the vision

Assess the current situation

Set goals and objectives

Identify issues of interest/concern to community (Done at Symposium)

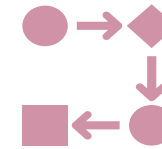
Formulate a strategy to address concerns



Ongoing

Develop action plans to resolve the issue

Identify measures of success for each action area



Next

Finalize community plan

Implementation

Iterate/Evolve

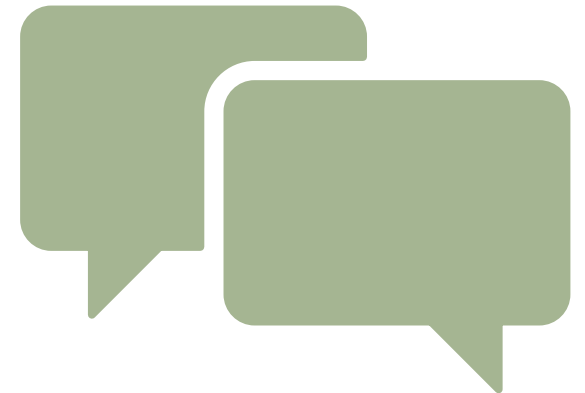
Community Planning Process Timeline

Date	Milestone
July – September 2025	Partnership confirmed with Groups/Collaboratives
October – November 2025	Action Plans Developed by Groups/Collaboratives & Planning Table
December 2025	Draft Community Plan Developed
Jan – March 2026	LEAG/Community Consultation
April 2026	Plan Finalized & Approved

Health and Housing Community Partner Webinar



- **How to get involved & stay informed**
 - Bi-annual webinars
 - Key Messages
 - Health and Housing Website:
<https://www.wghealthandhousing.ca>
- **Please send questions, comments and/or feedback about the work of the Planning Table and/or today's webinar to:**
healthandhousing@wellington.ca
- **In follow-up:**
 - A link to the recording of this webinar as well as the slides from the presentation will be sent to participants
 - A Q&A sheet will be developed from the questions collected in the chat and will be circulated to this group
- **Next Webinar** – Spring/Summer 2026



Health & Housing
Community
Planning Table

Community
Partner
Webinar
Q&A



Health & Housing
Community
Planning Table

Thank you for
your
participation!

