

Wellington-Guelph Health and Housing Community Plan

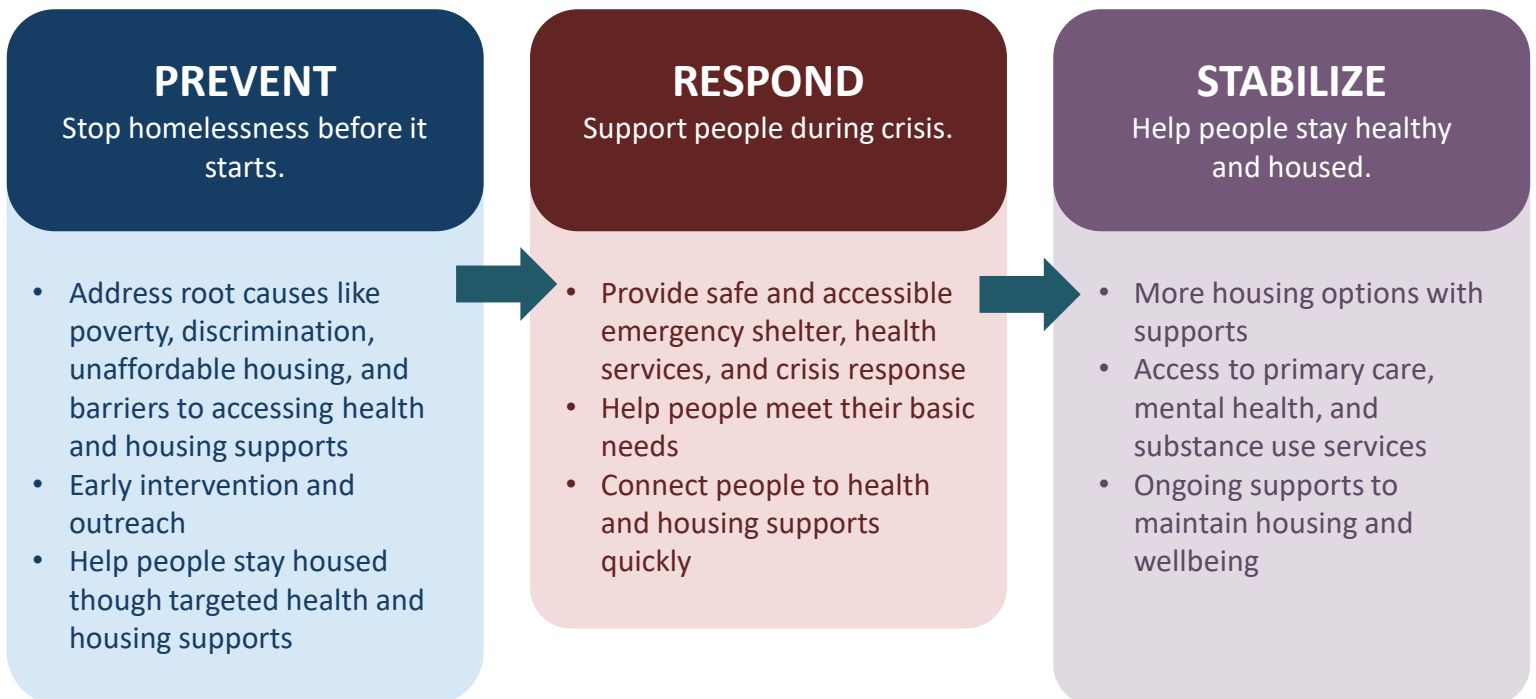
Our Vision

Everyone in Wellington County and Guelph has a safe place to call home in a loving and healthy community.

The Wellington-Guelph Health and Housing Community Planning Table brings together health, housing, social services, non-profit, and municipal partners with lived experts and the Indigenous community to address homelessness through coordinated action. This plan provides a shared framework to strengthen prevention, improve emergency response, and support long-term housing stability and wellbeing.

Framework for Action

A shared approach to preventing homelessness and improving health and housing outcomes.



INDIGENOUS LEADERSHIP

Indigenous community members and providers lead the way in developing culturally appropriate services that respond to the needs of Indigenous people and communities across all areas of this work.

WHAT WE NEED TO MAKE THIS WORK

LIVED EXPERIENCE

Input from people with lived experience helps to inform planning and service delivery.

PARTNERSHIP AND INTEGRATION

Strong collaboration across health, housing, and community services.

DATA AND DECISION MAKING

Better data sharing and information to guide decisions.

ADVOCACY

Advocate for the policies, funding, and resources our community needs.

PUBLIC EDUCATION

Reduce stigma and build understanding of homelessness, mental health, and substance use challenges.