



WELLINGTON-GUELPH HEALTH & HOUSING COMMUNITY PLANNING
TABLE – COMMUNITY WEBINAR

2025.06.04

Meeting Agenda

1. Welcome and Review Meeting Objectives
2. Present the Health and Housing Community Plan
3. Overview of the Work of the Wellington-Guelph Health & Housing Community Planning Table
 - a) Housing First Program
 - b) Coordinated Outreach program
 - c) Daytime Services
 - d) Build Canada Homes
 - e) Homelessness Reduction Innovation Fund
 - f) Aligning partners towards collective action and impact
4. Question and Answers
5. Closing Remarks



Health & Housing Community Planning Table - Community Partner Meeting

Meeting Objectives:

1. Share the Health and Housing Community Plan.
2. Engage and invite collaboration with impacted partners in the work of the Planning Table.
3. Provide an update regarding work of Wellington-Guelph Health and Housing Community Planning Table (WGHHCT)

Wellington Guelph Health & Housing Community Planning Table Membership



Emmi Perkins (Co-Chair)	Guelph Wellington OHT
Luisa Artuso (Co-Chair)	County of Wellington
Sarah Gillies	County of Wellington
Angela Stanley	Wellington Health Care Alliance
Elsa Mann	Rural Wellington Community Team
Councillor Linda Busuttil	City of Guelph Council
Dominica McPherson	Wellington Guelph Poverty Task Force
Kristen Cairney	Wyndham House
Melissa Kwiatkowski	Guelph Community Health Centre
Kristen Kerr	Stonehenge Therapeutic Community
Gail Hoekstra	Stepping Stone
Helen Fishburn	CMHA of Waterloo-Wellington
Rita Isley	WDGPH
Councillor Dave Anderson	County of Wellington Council
Eric Philip	Thresholds Homes and Supports
Andrea DeJong	Guelph General Hospital
Sharon Deally-Grzybowski	Homewood Health Centre
Colleen Clack-Bush	City of Guelph (on behalf of Guelph Wellington Paramedic Services)
Dave Purdy	County of Wellington
Alyssandra Kent	Community Resource Centre of North and Centre Wellington
Kari Simpson	East Wellington Community Services



WELLINGTON-GUELPH HEALTH & HOUSING COMMUNITY PLAN

June 2026



Today's Presentation

- Why This Matters
- How We Built This Plan
- What We're Seeing in Our Community
- Our Framework for Action
 - Prevention
 - Emergency Response
 - Health & Housing Supports
 - Indigenous-Led Solutions
 - Enablers of System Change
- How We Will Know if This is Working
- How You Can Be Part of This



Why This Matters

How We Built This Plan

01

Health & Housing Symposiums

Brought together diverse perspectives from our community to identify shared priorities and build consensus.

02

Health and Housing Community Planning Table

Brings together community partners to address homelessness and precarious health and housing in Wellington-Guelph.

03

Lived Experience Advisory Group

Community members with personal experience of health and housing challenges helped to inform this plan from the start.

Lived Experience Advisory Group

What is the Lived Experience Advisory Group and how do we work together with the Planning Table?

The Lived Experience Advisory Group has provided input on:

- Winter Response Plan
- Unsheltered Homelessness Check-ins
- How We Work Together – Planning Table and Lived Experience Advisory Group
- Daytime Programming
- Supports Needed to take Steps toward Permanent Housing
- Understanding Lived Experience
- Health Supports and Services for People Experiencing Homelessness
- Health and Housing Community Plan

Vision and Values

- Everyone in Wellington County and Guelph has a safe place to call home in a loving and healthy community
- Accessible, Connected, Dignified, Equitable, Responsive, Safe

Overarching recommendations from the Lived Experience Advisory Group for the Health and Housing Community Plan



Vision

Everyone in Wellington County and Guelph has a safe place to call home in a loving and healthy community.

Values



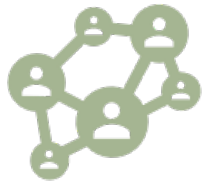
Accessible



Dignified



Responsive



Connected



Equitable



Safe

Overarching LEAG Recommendations

- Invest in people, not just programs
- Stabilize staffing and embed peer roles across systems
- Create coordinated service and program hubs (urban & rural) with predictable hours
- Integrate health, housing, outreach, and discharge planning
- Make after-hours support standard, not exceptional
- Measure success by individual stability and individual progress, not only program inputs
- Lived experience validates current strategic plans, adds operational details on what works and identifies gaps that may be overlooked – ultimately strengthening the ability for plans to lead to effective implementation and system change.



What We're Seeing In Our Community

Understanding the local landscape of health, housing, and homelessness

Homelessness Is Growing

Wellington-Guelph By-Name Data

124

avg. individuals in chronic
homelessness per month

2021

219

avg. individuals in chronic
homelessness per month

2025



Homelessness and Health Are Deeply Intertwined

2024 Wellington-Guelph Point-in-Time Count

71%

reported a
mental health issue

73%

reported a
substance use issue

43%

reported another illness
or medical condition

79% of participants identified **two or more** of these health challenges at the same time.

Our Framework for Action

12 action areas organized across 3 pillars, Indigenous-led solutions, and system enablers



Prevention

Action areas:

Upstream Prevention

Prevention Interventions

Addressing root causes of homelessness, including unmet health needs, to reduce the number of individuals reaching a crisis point.

The goal is to shift investment upstream — before people reach an emergency.

Upstream Prevention

We will...

Reduce homelessness, mental health challenges, and substance use challenges by ensuring access to support and resources that promote social inclusion and enhance overall wellness.

Prevention Interventions

We will...

Prevent homelessness and support housing stability for individuals at high risk of, newly experiencing, or who have previously experienced homelessness by ensuring access to targeted, prevention interventions.

Emergency Response

Action areas:

Emergency Responses to Homelessness

Provision of Basic Needs

Providing immediate interventions to support individuals during crises.

While emergency responses are necessary, this framework actively seeks to reduce reliance on them by investing in prevention and longer-term supports.

Emergency Responses to Homelessness

We will...

Ensure everyone can access safe, dignified, and accessible emergency interventions, including accommodations, integrated health services, and crisis response.

Provision of Basic Needs

We will...

Ensure access to washrooms, showers, water, food, laundry, and warming/cooling spaces, while linking people to permanent housing and health solutions.

Health & Housing Supports

Action areas:

Housing Options

Mental Health & Substance Use Services

Comprehensive Health Services

Ensuring access to essential services that facilitate stabilization and long-term recovery.

These supports are designed to help people not just access housing and health care, but maintain them over time.

Housing Options

We will...

Increase the availability and diversity of housing options to meet current housing needs.

Mental Health & Substance Use Services

We will...

Support equitable access to mental health and substance use services.

Comprehensive Health Services

We will...

Support equitable access to comprehensive health services, including primary care.

STANDALONE ACTION AREA

Indigenous-Led Solutions

Enhance access to culturally appropriate services for Indigenous peoples with precarious health and housing, by supporting Indigenous-led solutions and establishing partnerships to develop tailored services and housing options.

Indigenous community members and providers lead the way in developing culturally appropriate services that respond to the needs of Indigenous people and communities across all areas of this work.

Enablers of System Change

These actions span all three pillars and are embedded throughout every action area.

Policy & Funding Advocacy

Establish a collective approach to advocate for policy reforms and changes to funding to address health and housing needs.

Public Education

Create community understanding and empathy for people experiencing homelessness, substance use challenges, and mental health issues.

Integration of Health & Housing

Integrate health supports into all housing services and housing supports into health services.

Data-informed Planning and Decision-making

Develop and maintain user-friendly service mapping and data collection to support informed decisions.

Lived Experience

Continued integration of lived experience expertise as part of the plan's implementation process.

Measuring Success

We will track performance across each of the 3 pillars.

Prevention Pillar

- Diversion and rapid re-housing placements
- Trends in the By-Name Data
- Waitlists for health, housing, and other supports
- Availability of rent supports

Emergency Response Pillar

- Multiple ED visits for individuals experiencing homelessness
- Discharges into homelessness from public institutions (hospitals, jails, etc)
- Length of time to become housed for individuals on By-Name Data

Supports Pillar

- Availability of specialized services
- Affordable housing units renovated and constructed
- Housing stability
- Funding secured from higher levels of government



Bringing it all together

What does this mean for our community?

PREVENT

Stop homelessness before it starts.

- Address root causes like poverty, discrimination, unaffordable housing, and barriers to accessing health and housing supports
- Early intervention and outreach
- Help people stay housed through targeted health and housing supports



RESPOND

Support people during crisis.

- Provide safe and accessible emergency shelter, health services, and crisis response
- Help people meet their basic needs
- Connect people to health and housing supports quickly



STABILIZE

Help people stay healthy and housed.

- More housing options with supports
- Access to primary care, mental health, and substance use services
- Ongoing supports to maintain housing and wellbeing

INDIGENOUS LEADERSHIP

Indigenous community members and providers lead the way in developing culturally appropriate services that respond to the needs of Indigenous people and communities across all areas of this work.

WHAT WE NEED TO MAKE THIS WORK

LIVED EXPERIENCE

Input from people with lived experience helps to inform planning and service delivery.

PARTNERSHIP AND INTEGRATION

Strong collaboration across health, housing, and community services.

DATA AND DECISION MAKING

Better data sharing and information to guide decisions.

ADVOCACY

Advocate for the policies, funding, and resources our community needs.

PUBLIC EDUCATION

Reduce stigma and build understanding of homelessness, mental health, and substance use challenges.

How You Can Be Part of This

Service Providers

Align your work with the action areas, identify partnership opportunities, and contribute to data sharing.

Decision-Makers & Funders

Invest in prevention and supports. Advocate for the policy and funding changes this plan calls for.

Community Members

Stay informed, share your voice, attend future sessions, and hold us accountable to this plan.

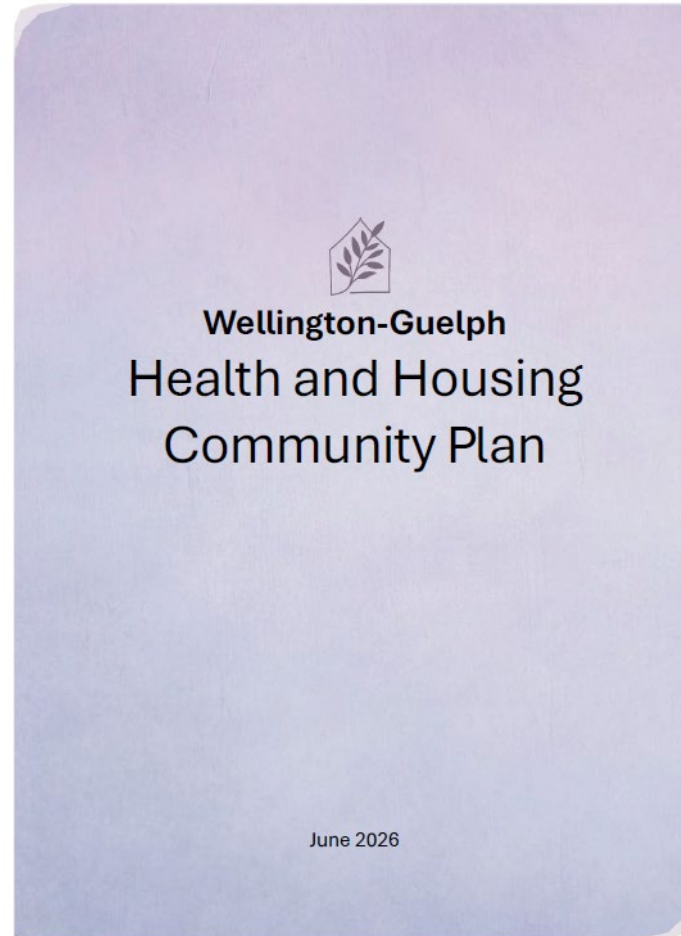
Want to learn more?

Visit

<https://www.wghealthandhousing.ca/what-we-do/publications-reports>

Email

healthandhousing@wellington.ca



Wellington-Guelph Health and Housing Community Plan

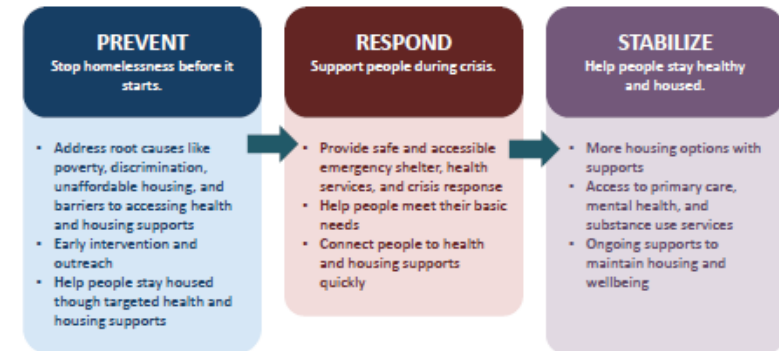
Our Vision

Everyone in Wellington County and Guelph has a safe place to call home in a loving and healthy community.

The Wellington-Guelph Health and Housing Community Planning Table brings together health, housing, social services, non-profit, and municipal partners with lived experts and the Indigenous community to address homelessness through coordinated action. This plan provides a shared framework to strengthen prevention, improve emergency response, and support long-term housing stability and wellbeing.

Framework for Action

A shared approach to preventing homelessness and improving health and housing outcomes.



INDIGENOUS LEADERSHIP

Indigenous community members and providers lead the way in developing culturally appropriate services that respond to the needs of Indigenous people and communities across all areas of this work.

WHAT WE NEED TO MAKE THIS WORK

LIVED EXPERIENCE Input from people with lived experience helps to inform planning and service delivery.	PARTNERSHIP AND INTEGRATION Strong collaboration across health, housing, and community services.	DATA AND DECISION MAKING Better data sharing and information to guide decisions.	ADVOCACY Advocate for the policies, funding, and resources our community needs.	PUBLIC EDUCATION Reduce stigma and build understanding of homelessness, mental health, and substance use challenges.
---	--	--	---	--



Celebrating Recent Successes in Health and Housing Integration



Housing First Program



Coordinated Outreach Program



Daytime Services



Build Canada Homes



Homelessness Reduction Innovation Fund

Housing First Model of Care in GW

Is there a way that we can better integrate our Health and Housing systems so that

A. More people can be housed out of homelessness, *faster*?

AND

B. Less people who are already housed lose their housing because they aren't accessing or receiving health supports or treatments that could have helped them *keep their housing*?

How do we do that? → Housing First

We have to design new ways of delivery health and housing supports that prioritize:

1. Immediate access to housing with no housing readiness conditions
2. Consumer choice and self-determination
3. Recovery orientation – promotion of well-being through access to harm reduction and treatment supports
4. Individualized and person-driven supports
5. Social and community integration through opportunities and access to social, cultural and vocational activities

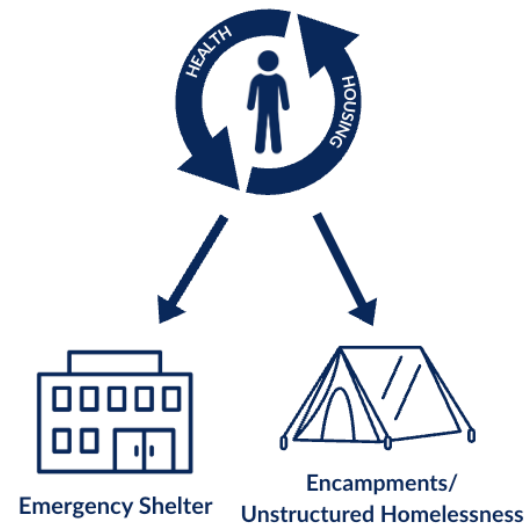
Gaetz, S., Scott, F., & Gulliver, T. (Eds.). (2013). *Housing First in Canada: Supporting Communities to End Homelessness*. Toronto: Canadian Homelessness Research Network Press.

What we are going to try to do:

- 1. Identify System Gaps:** find where our existing services are not aligned with Housing First best practices;
- 2. Design an Integrated Model of Care:** Bring health and housing partners together to come up with new ways to deliver services for those in homelessness or at risk of homelessness that will improve:
 1. Coordination between health and housing service providers,
 2. Access to care - reduce dropped care, increase engagement,
 3. Crisis response – respond earlier and faster when people are in crises
 4. Housing stability – prioritize housing people out of homelessness and helping them to stay housed
- 3. Measure, Evaluate, and Improve**

Where to start?

We will begin by looking at a model to support people experiencing homelessness in shelter or unstructured homelessness including encampments





Celebrating Recent Successes in Health and Housing Integration



Housing First Program



Coordinated Outreach Program



Daytime Services



Build Canada Homes



Homelessness Reduction Innovation Fund

Coordinated Outreach Project Updates

Some of the work to date includes:

- Feedback from the LEAG
-
- Ongoing System Mapping
- Basic Needs Work Group (2024)
- Outreach Sessions (Fall 2024/Winter 2025)
- Org Code Coordinated Outreach Strategy (Winter 2025- Winter 2026)

OrgCode Strategy Identified Opportunities

- Formalize an Outreach Coordination Lead and weekly Outreach Coordination Table.
- Adopt a single Outreach & Response Protocol for those experiencing unsheltered homelessness across service partners
- Pilot after-hours coverage (e.g., 5–9 p.m.) and rural circuits to close access gaps
- Improve consistent learning for all outreach providers via Boot Camp session, supervisor coaching, and quarterly sessions.



Wellington
County



Canadian Mental
Health Association
Waterloo Wellington

Association canadienne
pour la santé mentale
Waterloo Wellington



Guelph CHC
growing healthy together

Outreach Partners (have designated Outreach Roles)



Support. Hope. Thrive.



Outreach Supporting Partners (Outreach/Encampment Check-ins as Part of Roles)



Wellington
County



Thank you

FOR QUESTIONS: PLEASE CONTACT KRISTEN CAIRNEY, THE CHAIR OF
THE OHT TIER 4/5 WORKING GROUP AT
KRISTEN.CAIRNEY@WYNDHAMHOUSE.ORG



Celebrating Recent Successes in Health and Housing Integration



Housing First Program



Coordinated Outreach Program



Daytime Services



Build Canada Homes



Homelessness Reduction Innovation Fund

Daytime Services

Project Purpose:

Develop a plan for Daytime Services in Wellington County and Guelph, in-line with the recommendations of the (past) Provision of Basic Needs Sub-working Group, to ensure that individuals experiencing homelessness or precarious health/housing have their basic needs met.

Project Objectives

- Co-design, in partnership with each municipality and local service organizations, a plan for daytime services to address specific needs of people experiencing homelessness or precarious health/housing in their area.
- Meaningfully incorporate the input of the Lived Experience Advisory Group in the development of plan.
- Identify and incorporate upstream solutions and long-term supports as able/appropriate.
- Develop measures to support evaluation.

Timelines

Activity	Date
Meeting with Community Organizations in Guelph	June 2026
Research Analysis	July/August 2026
Information Presentations to local Municipal Councils Meeting with Community Organizations in Wellington County	August to October 2026
Formal Report to Planning Table	April 2027

Lived Experience Advisory Group

Daytime Programming

Low Barrier spaces that offer access to basic needs resources and services with onsite supports including crisis supports, referrals, (ground level) life skills and learning opportunities by offering programs that inspire mental, emotional, and spiritual wellness.

A Place to Build Connection, Community, and Sense of Belonging:

- Safe, inclusive, and respectful
- Warm and welcoming, no judgement, and grounded in compassion and consideration
- A space that offers opportunities to learn skills, promote growth and wellness, and provide access to resources in a tangible way.
- Build rapport and trust between people coming into the space and staff/volunteers

Lived Experience Advisory Group

What's Needed:

- Access to Resources
- Access to Programming
- Staffing Requirements and Training
- Safety Considerations
- Information Sharing with Community Partners
- Locations and Models
- Hours of Operation



Celebrating Recent Successes in Health and Housing Integration



Housing First Program



Coordinated Outreach Program



Daytime Services



Build Canada Homes

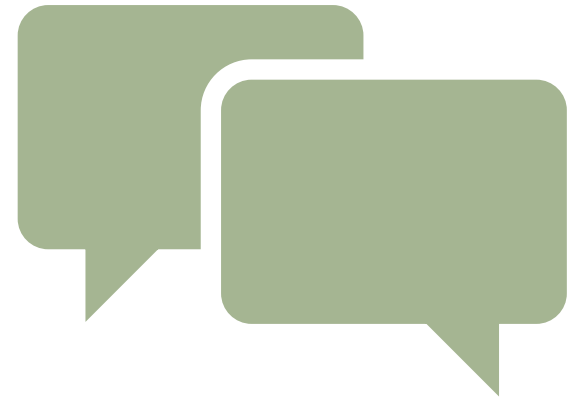


Homelessness Reduction Innovation Fund

Health and Housing Community Partner Webinar



- **How to get involved & stay informed**
 - Bi-annual webinars
 - Key Messages
 - Health and Housing Website:
<https://www.wghealthandhousing.ca>
- **Please send questions, comments and/or feedback about the work of the Planning Table and/or today's webinar to:**
healthandhousing@wellington.ca
- **In follow-up:**
 - A link to the recording of this webinar as well as the slides from the presentation will be sent to participants
 - A Q&A sheet will be developed from the questions collected in the chat and will be circulated to this group
- **Next Webinar – Fall 2026**



Health & Housing
Community
Planning Table

Community
Partner
Webinar
Q&A



Health & Housing
Community
Planning Table

Thank you for
your
participation!

